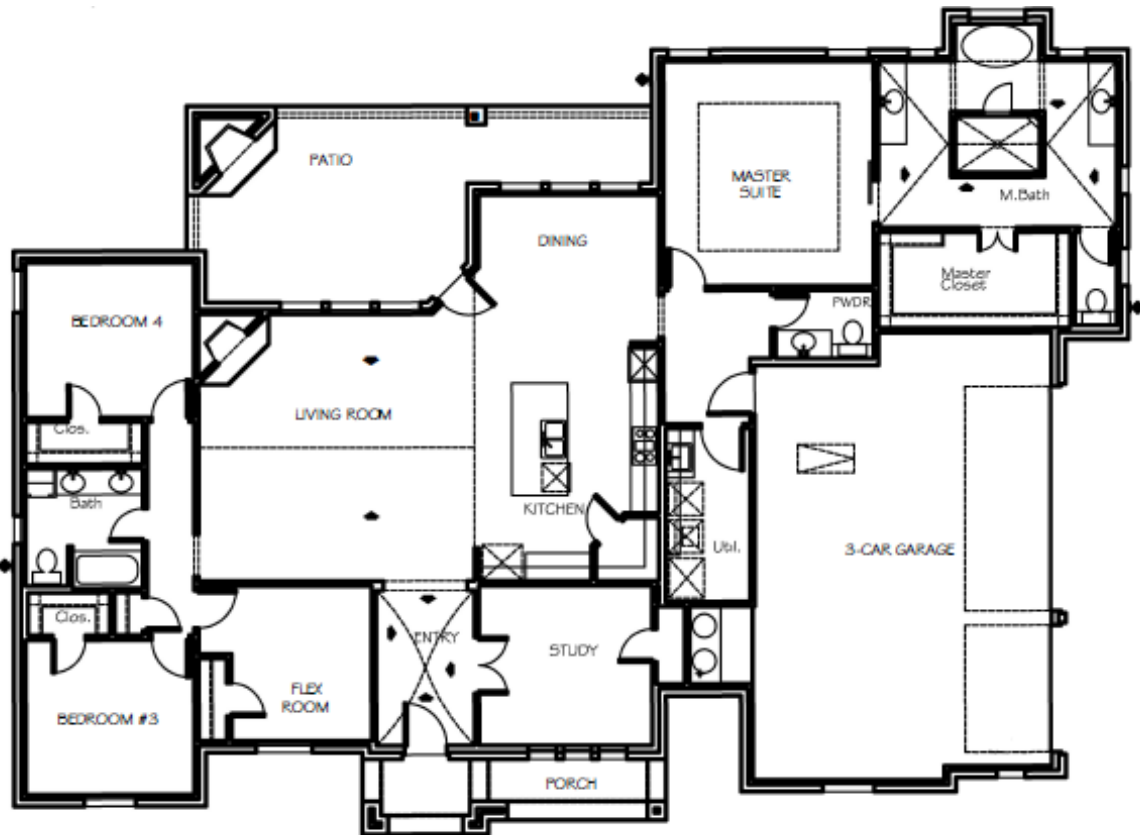


- ❖ 4 Bedrooms
- ❖ Open Living Area
- ❖ Beautiful Kitchen
- ❖ Study
- ❖ 3 Car Garage
- and many more beautiful features



141 ALTOM ROAD
FLOOR PLAN 2580SF
\$387,000

Office: 817-887-9405/email: info@ashlynhomes.com

In the interest of continuing improvements, Ashlyn Homes, Inc. reserves the right to change prices, features, plans and specifications without notice per plan, per community. Square footage and measurements are approximate. Deed and or additional restrictions may apply.