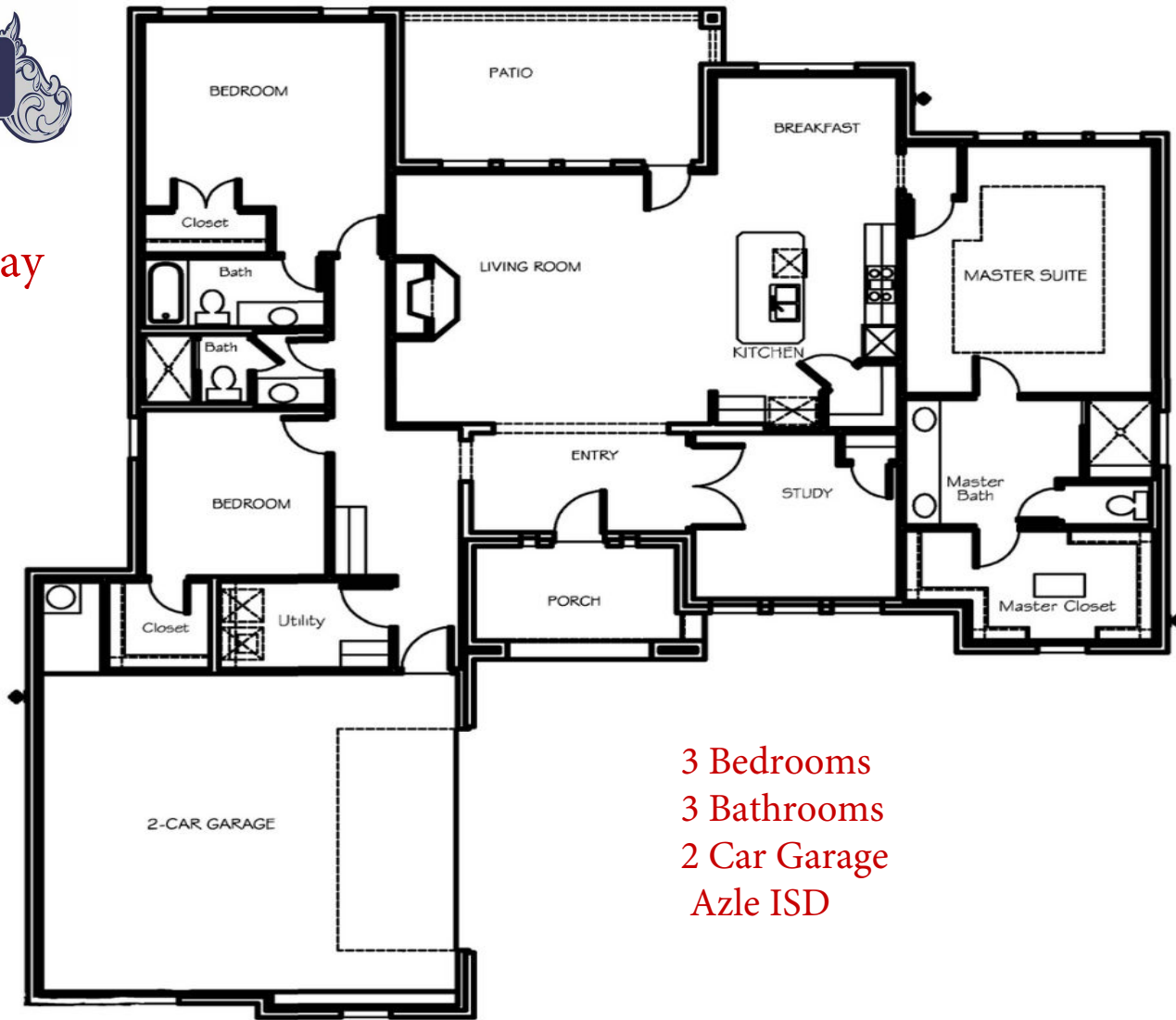




530 Christian Way
\$386,900
2414 sqft



3 Bedrooms
3 Bathrooms
2 Car Garage
Azle ISD



In the interest of continuing improvements, Ashlyn Homes, Inc. reserves the right to change prices, features, plans and specifications without notice per plan, per community. Square footage and measurements are approximate. Deed and or additional restrictions may apply.