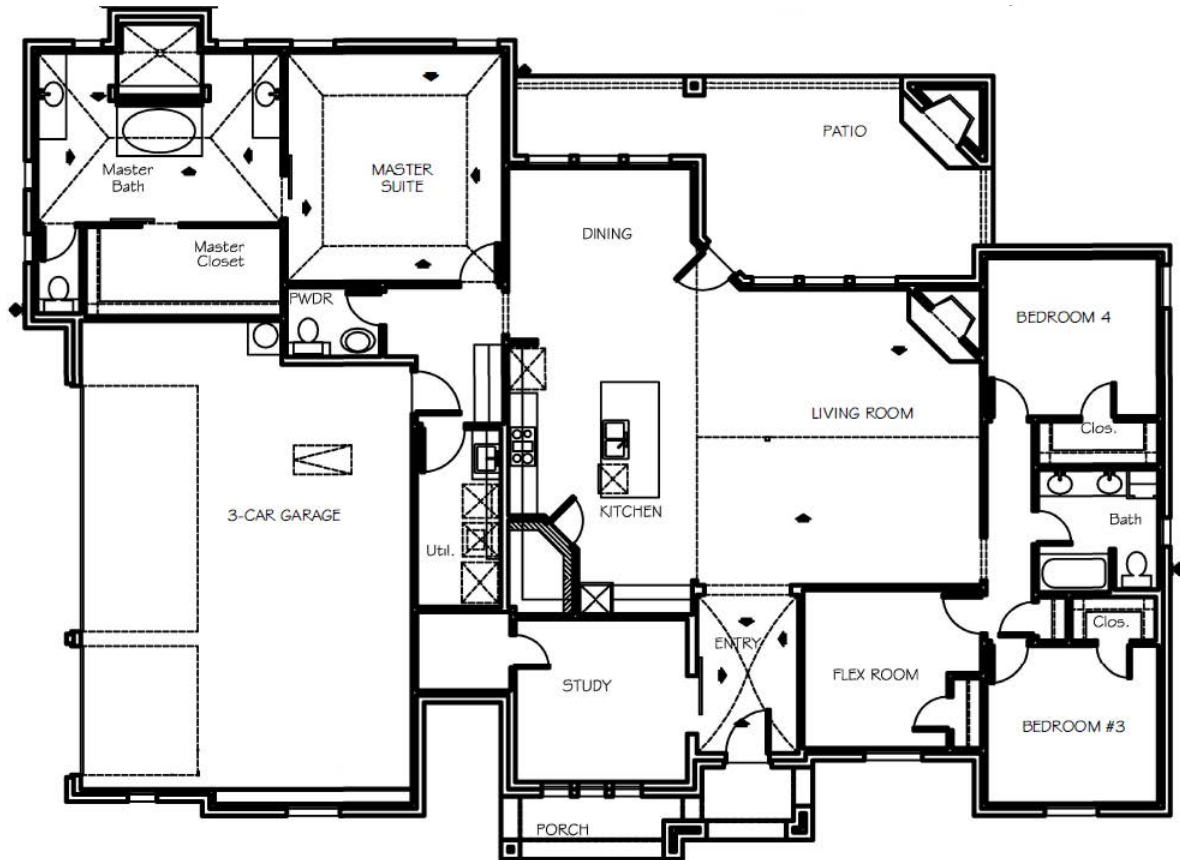




- ❖ 4 Bedrooms
- ❖ Beautiful Living Area
- ❖ Study
- ❖ 3 Car Garage
- and MANY more beautiful



304 N. SADDLE SPUR COURT

\$439,000

2661 SF

Office: 817-887-9405 email: [info@ashlynhomes.com](mailto:info@ashlynhomes.com)



FRONT ELEVATION

817-887-9405 or [info@ashlynhomes.com](mailto:info@ashlynhomes.com)

In the interest of continuing improvements, Ashlyn Homes, Inc. reserves the right to change prices, features, plans and specifications without notice per plan, per community. Square footage and measurements are approximate. Deed and or additional restrictions may apply.