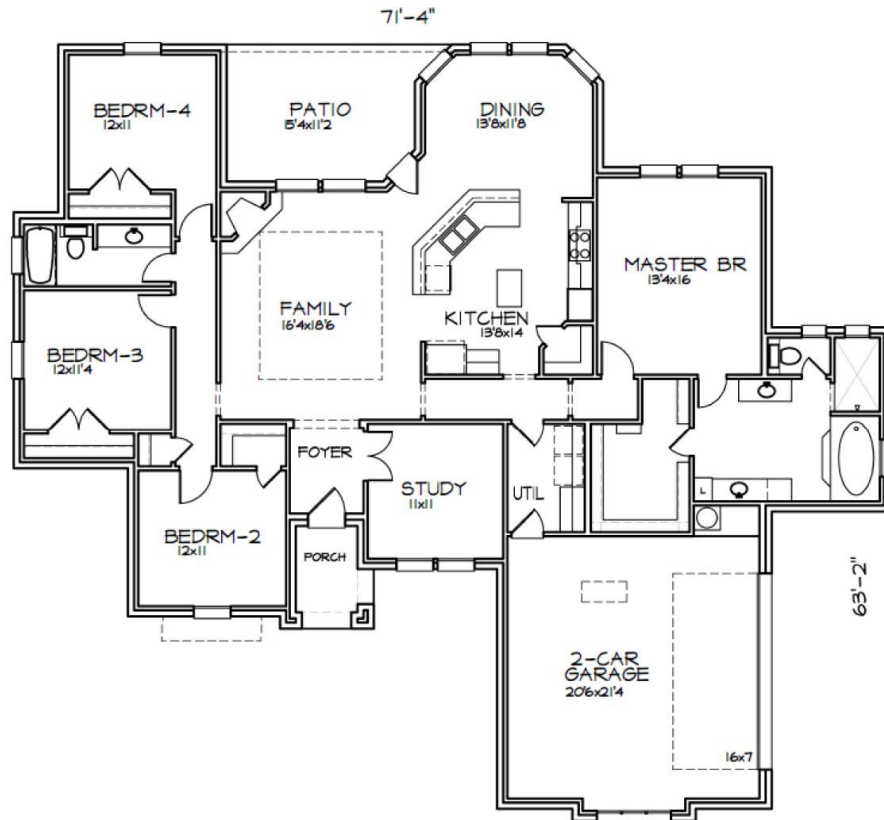


- ❖ 4 Bedrooms
- ❖ Open Living Area
- ❖ Beautiful Kitchen
- ❖ Study
- and many more beautiful features



436 CHRISTIAN WAY  
FLOOR PLAN 2298SF  
\$344,700

Office: 817-887-9405/email: [info@ashlynhomes.com](mailto:info@ashlynhomes.com)

In the interest of continuing improvements, Ashlyn Homes, Inc. reserves the right to change prices, features, plans and specifications without notice per plan, per community. Square footage and measurements are approximate. Deed and or additional restrictions may apply.